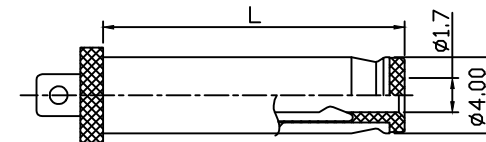
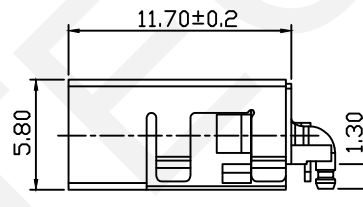
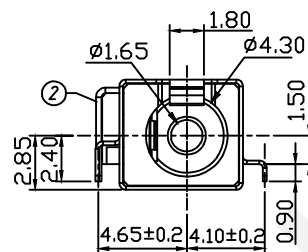
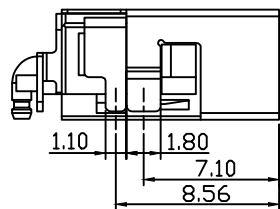


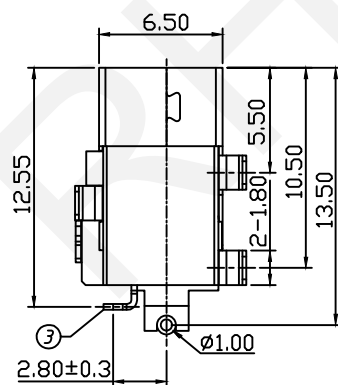
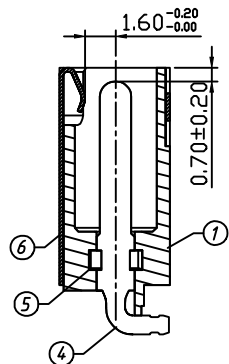
PCB LAYOUT TOP VIEW

SPECIFICATION

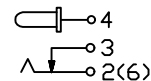
Rated Load:DC 20V 7A
 Contact Resistance:30mΩ, Max
 Insulation Resistance:100MΩ, Min
 Withstand Voltage:AC500V
 Actuating Force:3-20N
 Life:5000 Cycles
 Operating Temperature:-30°C-70°C



RECOMMENDED PLUG



SCHMATIC



| NO | Description | QTY | Material | Plating |
|----|--------------|-----|----------|------------|
| 1 | Housing | 1 | PA9T/LCP | --- |
| 2 | Spring Piece | 1 | Bronze | Au-Plating |
| 3 | Curve Piece | 1 | Brass | Au-Plating |
| 4 | PIN | 1 | Brass | Au-Plating |
| 5 | Stopper | 1 | PA9T/LCP | --- |
| 6 | Shell | 1 | Bronze | Ni-Plating |

RHTECP NINGBO RHT ELECTRONIC CO.,LTD

| | | | | | |
|----------|----------------|-------|--------|---------------|---------------------------------|
| UNITS:mm | SHEET SIZE: A4 | | | SCALE:--- | DRWN BY PAN |
| 0~3 | 3~18 | 18~50 | 50~120 | CHK'D BY FENG | 20V 7A DC Jack Mid Mount 1.35mm |
| ±0.12 | ±0.15 | ±0.3 | ±0.5 | APPR BY ZHAN | |

THIRD ANGLE PROJECTION



RHTAYDC-035