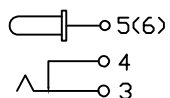


PCB LAYOUT TOP VIEW

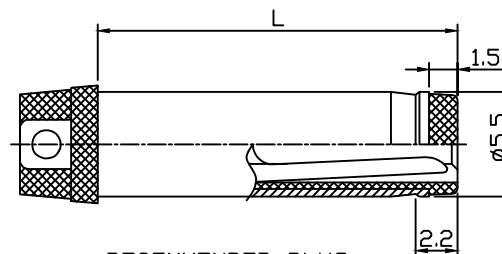
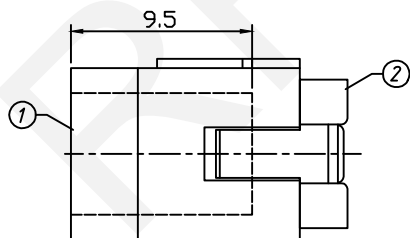
SPECIFICATION

Rated Load:DC 30V 2A  
 Contact Resistance:30mΩ, Max  
 Insulation Resistance:100MΩ, Min  
 Withstand Voltage:AC500V  
 Actuating Force:3-20N  
 Life:5000 Cycles  
 Operating Temperature:-30°C-70°C

SCHEMATIC



|      |      |      |
|------|------|------|
| PIN  | ∅2.0 | ∅2.5 |
| APPO |      |      |



RECOMMENDED PLUG

| NO | Description  | QTY | Material | Plating    |
|----|--------------|-----|----------|------------|
| 1  | Housing      | 1   | PA9T     | ---        |
| 2  | Cover        | 1   | PA9T     | ---        |
| 3  | Spring Piece | 1   | SUS301   | Ag-Plating |
| 4  | Curve Piece  | 1   | Brass    | Ag-Plating |
| 5  | Flat Foot    | 1   | Brass    | Ag-Plating |
| 6  | PIN          | 1   | Brass    | Ni-Plating |

RHTECP NINGBO RHT ELECTRONIC CO.,LTD

|          |                |       |        |               |                            |
|----------|----------------|-------|--------|---------------|----------------------------|
| UNITS:mm | SHEET SIZE: A4 |       |        | SCALE:---     | DRWN BY PAN                |
| 0~3      | 3~18           | 18~50 | 50~120 | CHK'D BY FENG | THIRD ANGLE PROJECTION<br> |
| ±0.12    | ±0.15          | ±0.3  | ±0.5   | APPR BY ZHAN  |                            |

30V 2A DC Jack DIP

RHTAYDC-004