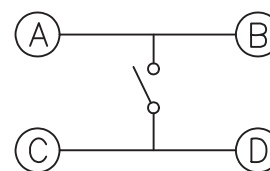
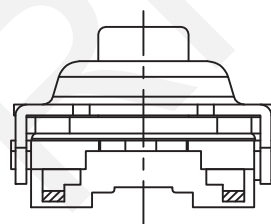
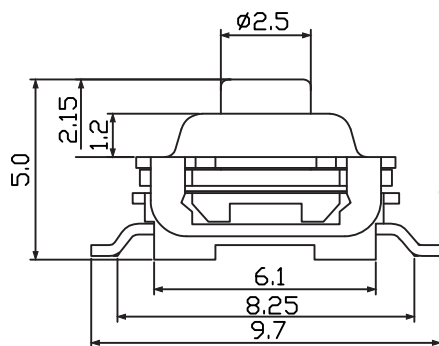


Recommended P.C.B layout



SCHEMATIC

Electrical:

1. Rating: 50mA 12V DC
2. Travel: 0.35 ± 0.1 mm
3. Contact Resistance: $\leq 50\Omega$ Max
4. Electrically Life: 100000 cycles Min.
5. Operating Force: 250 ± 50 gf
6. Environment temperature: $-30^\circ\text{C} \sim +80^\circ\text{C}$

Materials:

1. Terminal: Brass, silver-plated
2. Foundation: PPA, Black
3. Shrapnel: Silver - Copper
4. Button: Silica Gel, Red
5. Stretching Lap: Brass, copper, tin

ORDER INFORMATION

RHTGYS7474-5-250-B

7.4x7.4mm Waterproof Tact

Height: 5mm

Operating Force: $250 (\pm 30)$ gf

Packing: B=Bulk

RHTECP NINGBO RHT ELECTRONIC CO.,LTD

UNITS:mm

SHEET SIZE: A4

SCALE:---

DRWN BY PAN

7.4x7.4mm Touch waterproof Tact switch

0~3

3~18

18~50

50~120

CHK'D BY FENG

THIRD ANGLE PROJECTION

± 0.12

± 0.15

± 0.3

± 0.5

APPR BY ZHAN



RHTGYS7474