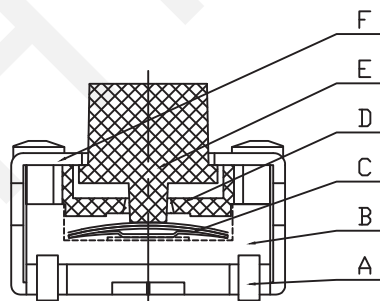
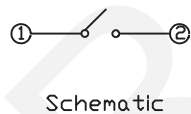
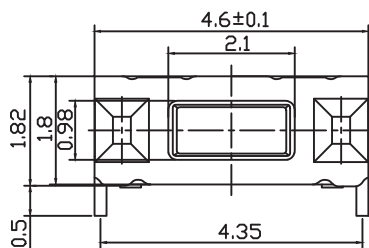


Installation Referring to FIG.



ELECTRICAL

- 1.Rating: 50mA 12V DC
- 2.Contact Resistance : 100mΩ Max
- 3.Insulation Resistance: 100MΩ Min
- 4.Dielectric Strength : 250V AC for 1min
- 5.Electrically Life:50000cycles
- 6.Environment temperature:-30°C~+80°C
- 7.Operating Force: 160/250(±30gf)
- 8.Seal temperature:260°C~280°C

Materials:

- A.cards: phosphor bronze 0.15, silver
- B.Base:LCP,white
- C.Reed:Imported steel impervious cover silver
- D.Plastic cover:LCP, white
- E.button:LCP, black
- F.Cover:phosphor bronze 0.2, silvered

ORDER INFORMATION

RHTGYS2404-3.5-180-B

2x4 Tact Switch Series
Height:3.5mm
Operating Force:90gf,180gf,250gf
Packing: B=Bulk

RHTECP NINGBO RHT ELECTRONIC CO.,LTD

UNITS:mm

SHEET SIZE: A4

SCALE:---

DRWN BY PAN

2x4 Tact Switch Series

0~3

3~18

18~50

50~120

CHK'D BY FENG

THIRD ANGLE PROJECTION

RHTGYS2404

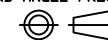
±0.12

±0.15

±0.3

±0.5

APPR BY ZHAN



1

2

3

4

5

6

7

8

9