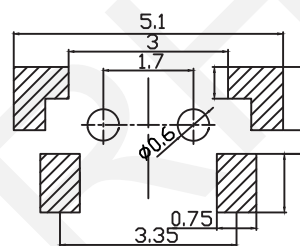
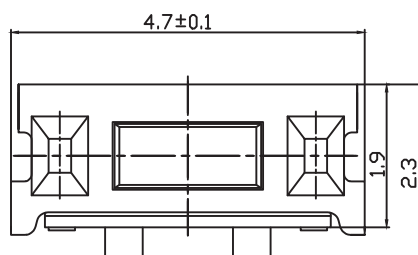
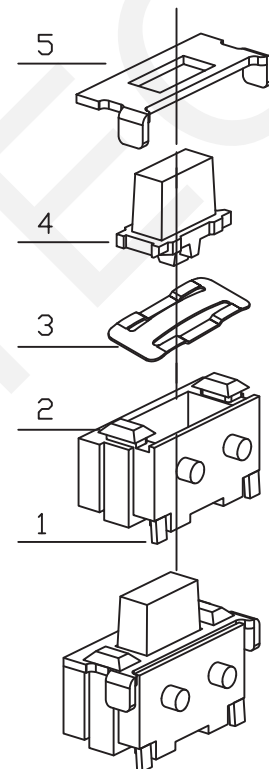
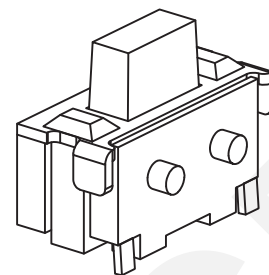


SCHEMATIC



P.C.B layout



Electrical:

- 1.Rating:50mA 12V DC
- 2.Contact Resistance:100mΩ Max.
- 3.Insulation Resistance:100MΩ Min,100V DC
- 4.Dielectric voltage proof:250V AC for 1min
- 5.Electrically Life:100000 cycles Min.
- 6.Operating Force:160±50gf
- 7.Environment temperature:-30°C~+80°C

Materials:

- 1.Cards: Phosphor, Silver plated
- 2.Pedestal:LCP,White
- 3.Shrapnel:Stainless steel
- 4.Push button:LCP,Black
- 5.Cover:H62,Silver plated

ORDER INFORMATION

RHTGYS2402-3.5-160-B

2x4 Tact Switch Series

Height:3.5mm

Operating Force:150(±30gf)

Packing: B=Bulk

RHTECP® NINGBO RHT ELECTRONIC CO.,LTD

UNITS:mm

SHEET SIZE: A4

SCALE:---

DRWN BY PAN

2x4mm With column,Heightening,Tactile Switches

0~3

3~18

18~50

50~120

CHK'D BY FENG

THIRD ANGLE PROJECTION

±0.12

±0.15

±0.3

±0.5

APPR BY ZHAN



RHTGYS2402