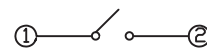
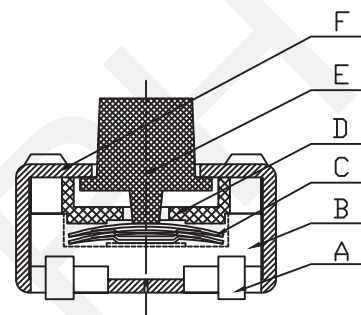
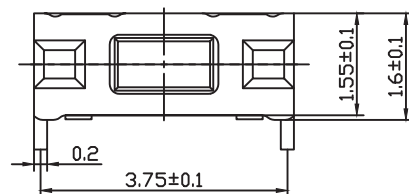


Installation Referring to FIG.



Circuit Diagram

ELECTRICAL

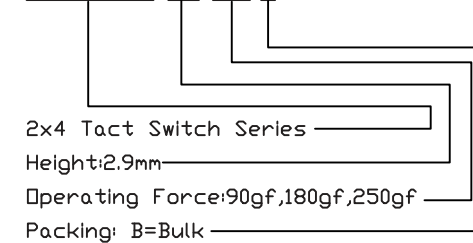
- 1.Rating: 50mA 12V DC
- 2.Contact Resistance : 100mΩ Max
- 3.Insulation Resistance: 100MΩ Min
- 4.Dielectric Strength : 250V AC for 1min
- 5.Electrically Life:100000cycles
- 6.Environment temperature:-30°C~+80°C
- 7.Operating Force: 160/250(±30gf)
- 8.Seal temperature:260°C~ 280°C

Materials:

- A.cards: phosphor bronze 0.15, silver
- B.Base: E1301
- C.Reed: Imported steel impervious cover silver
- D.Plastic cover:
- E.button: LCP, black
- F.Cover: phosphor bronze 0.2, silvered

ORDER INFORMATION

RHTGYS2301-2.9-180-B



RHTECP NINGBO RHT ELECTRONIC CO.,LTD

UNITS:mm	SHEET SIZE: A4		SCALE:---
0~3	3~18	18~50	50~120
±0.12	±0.15	±0.3	±0.5

DRWN BY PAN

CHK'D BY FENG

APPR BY ZHAN

2x3 Tact Switch Series

THIRD ANGLE PROJECTION



RHTGYS2301