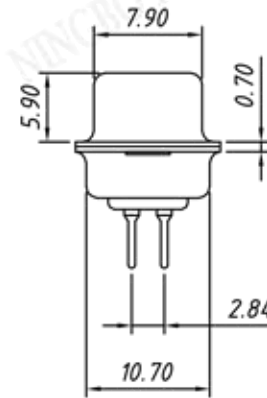


RECOMMENDED PCB LAYOUT
TOLERANCE: ±0.05mm

Number of Contacts	DIMENSION		
	A±0.25	B±0.20	C±0.20
09	30.81	24.99	16.33
15	39.14	33.32	24.66
25	53.04	47.04	38.38
37	69.32	63.50	54.84

Material:
Housing: PBT+30% Glass filled ,UL94V-0
Contacts: Brass ,Gold Plating or
 Gold Plating on Contact Area,
 Tin on Solder Tail.
Shell: Steel, Nickel Plating

Electrical Characteristics:
Current Rating: 5 AMP
Insulator Resistance: 1000MΩ Min. at DC 500V
Withstanding Voltage: 500V AC (rms) for 1 minute
Contact Resistance: 20mΩ Max. Initial
Operating Temperature: -40°C ~ +105°C



Call waiting force		
Contacts	Insertion	Withdraw
09M/09F	≤4.0kgf	≥1.8kgf
15M/15F	≤4.5kgf	≥2.0kgf
25M/25F	≤6.0kgf	≥2.5kgf
37M/37F	≤8.0kgf	≥3.5kgf

Order Information

RE - C - 221 - XX - F - L

D-SUB Connector, 2 Row Through Hole
 XX-No. of 09,15,25,37,50pins
 Connector type: M-Male F-Female
 Housing Color:
 B-Black L-Blue W-White



NINGBO RHT ELECTRONIC CO.,LTD

UNITS:mm

SHEET SIZE:A4

SCALE:---

>0~3

>3~18

>18~50

>50~120

±0.12

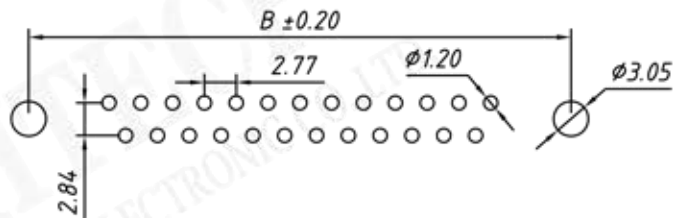
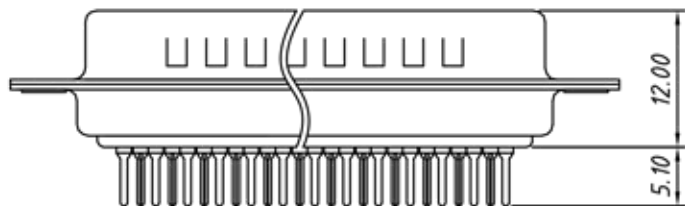
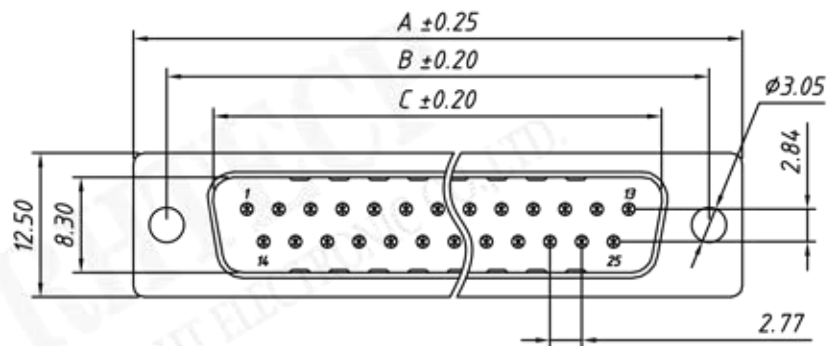
±0.15

±0.3

±0.5

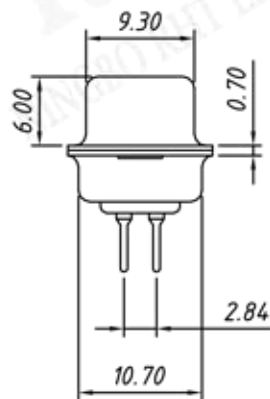
RE-C-22A-XX-F-L

CONNECTOR



RECOMMENDED PCB LAYOUT
TOLERANCE: ±0.05mm

Number of Contacts	DIMENSION		
	A±0.25	B±0.20	C±0.20
09	30.81	24.99	16.92
15	39.14	33.32	25.25
25	53.04	47.04	38.96
37	69.32	63.50	55.42



Material:
Housing: PBT+30% Glass filled ,UL94V-0
Contacts: Brass ,Gold Plating or
Gold Plating on Contact Area,
Tin on Solder Tail.
Shell: Steel, Nickel Plating

Electrical Characteristics:
Current Rating: 5 AMP
Insulator Resistance: 1000MΩ Min. at DC 500V
Withstanding Voltage: 500V AC (rms) for 1 minute
Contact Resistance: 20mΩ Max. Initial
Operating Temperature: -40°C ~ +105°C

Call waiting force		
Contacts	Insertion	Withdraw
09M/09F	≤4.0kgf	≥1.8kgf
15M/15F	≤4.5kgf	≥2.0kgf
25M/25F	≤6.0kgf	≥2.5kgf
37M/37F	≤8.0kgf	≥3.5kgf

Order Information

RE - C - 221 - XX - M - L

D-SUB Connector, 2 Row Through Hole
XX-No. of 09,15,25,37,50pins
Connector type: M-Male F-Female
Housing Color: B-Black L-Blue W-White



NINGBO RHT ELECTRONIC CO.,LTD

UNITS:mm

SHEET SIZE:A4

SCALE:---

>0~3

>3~18

>18~50

>50~120

±0.12

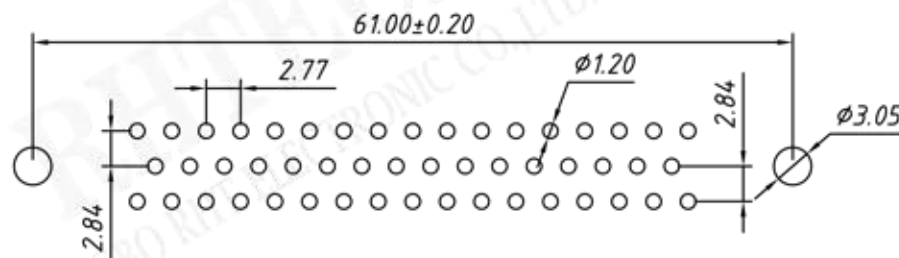
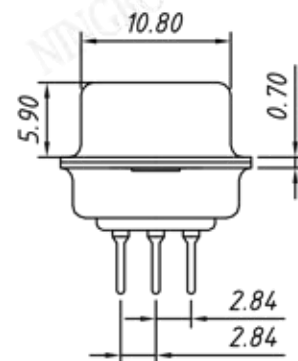
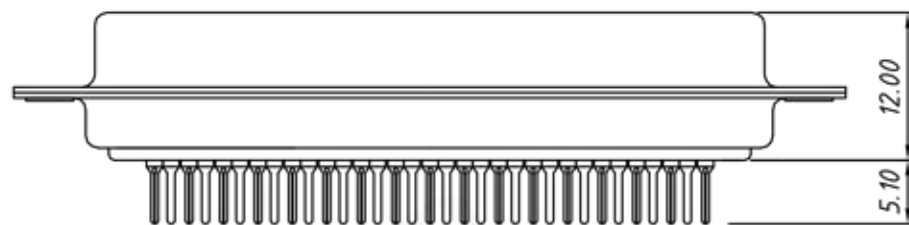
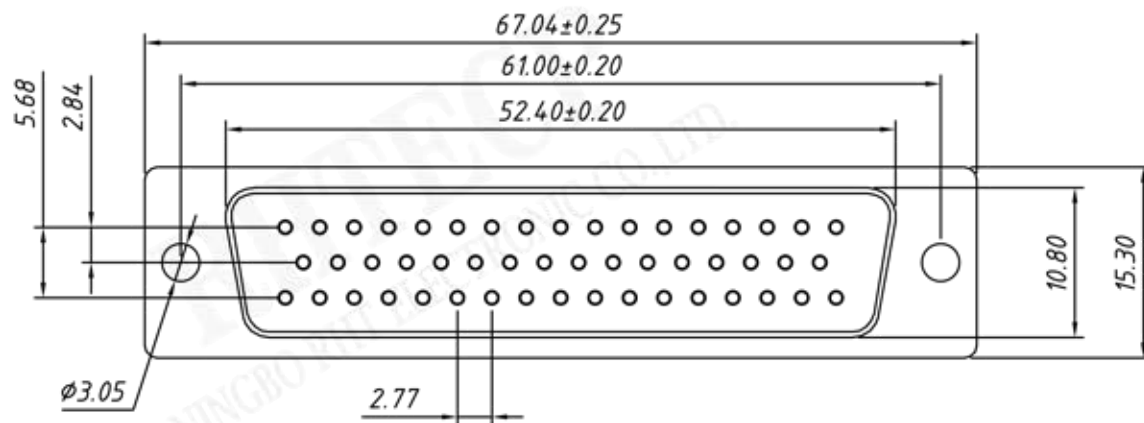
±0.15

±0.3

±0.5

RE-C-221-XX-M-L

CONNECTOR



RECOMMENDED PCB LAYOUT
TOLERANCE: ±0.05mm

Material:
 Housing: PBT+30% Glass filled,UL94V-0
 Contacts: Brass ,Gold Plating or
 Gold Plating on Contact Arer,
 Tin on Solder Tail.
 Shell: Steel, Nickel Plating

Electrical Characteristics:
 Current Rating: 5 AMP
 Insulator Resistance: 1000MΩ Min. at DC 500V
 Withstanding Voltage: 500V AC (rms) for 1 minute
 Contact Resistance: 20mΩ Max. Initial
 Operating Temperature: -40°C ~ +105°C

Order Information

RE - C - 221 - 50 - F - L

D-SUB Connector, Through Hole
 XX-No.of 09,15,25,37,50pins
 Connector type: M-Male F-Female
 Housing Color:
 B-Black L-Blue W-White



NINGBO RHT ELECTRONIC CO.,LTD

UNITS:mm

SHEET SIZE:A4

SCALE:---

RE-C-221-50-F-L

>0~3

>3~18

>18~50

>50~120

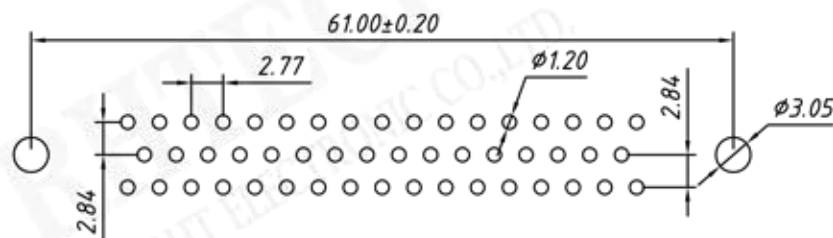
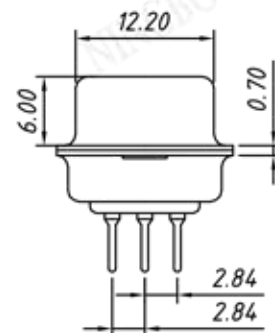
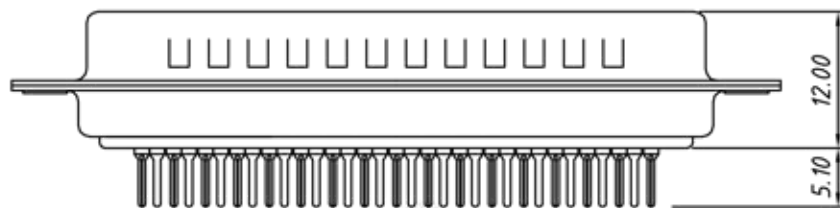
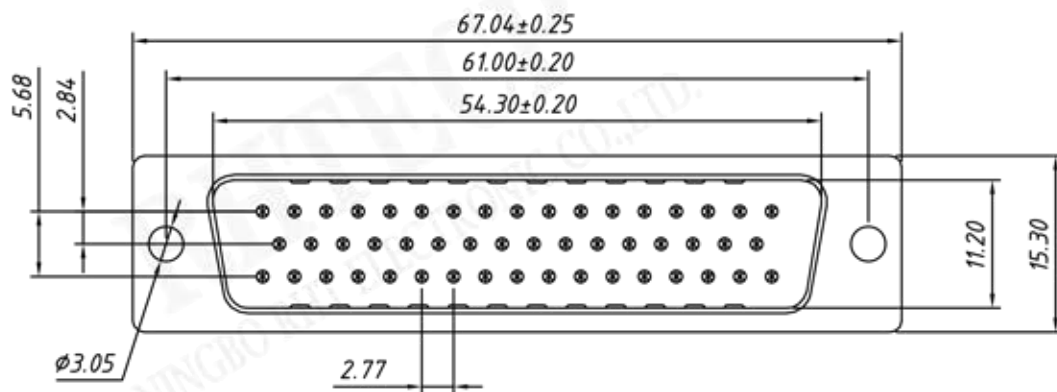
±0.12

±0.15

±0.3

±0.5

CONNECTOR



RECOMMENDED PCB LAYOUT
TOLERANCE: ±0.05mm

Material:

Housing: PBT+30% Glass filled ,UL94V-0

Contacts: Brass ,Gold Plating or

Gold Plating on Contact Arer,

Tin on Solder Tail.

Shell: Steel, Nickel Plating

Electrical Characteristics:

Current Rating: 5 AMP

Insulator Resistance: 1000MΩ Min. at DC 500V

Withstanding Voltage: 500V AC (rms) for 1minut

Contact Resistance: 20mΩ Max. Initial

Operating Temperature: -40°C ~ +105°C

Order Information

RE - C - 221 - 50 - M - L

D-SUB Connector,
Through Hole

XX-No.of 09,15,25,37,50pins

Connector type: M-Male F-Female

Housing Color:

B-Black L-Blue W-White