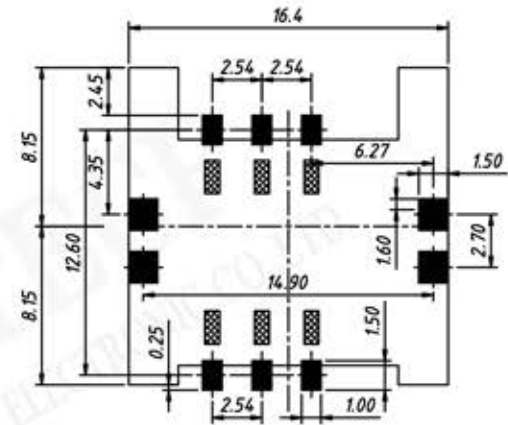
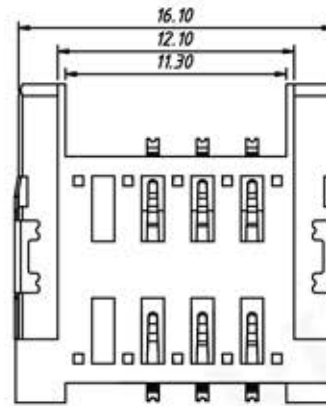
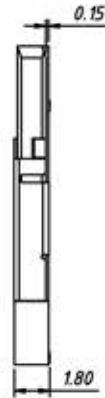
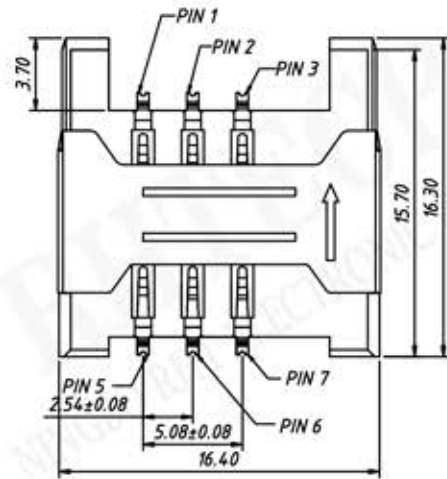


P/N:RE-C-SIM-044C-6P-R



RECOMMENDED PCB LAYOUT
TOP VIEW(.XX ±0.05)
Prohibited area Solder area

Material:

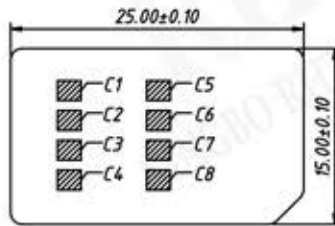
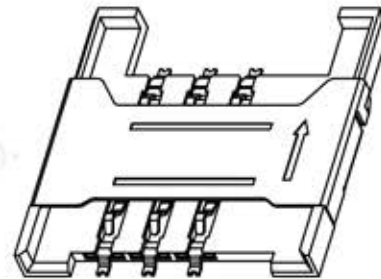
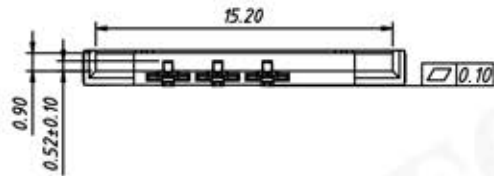
Housing:High Thermoplastic,UL 94 V-0.Black.
Contact:Copper Alloy.
Shell:Stainless Steel.

Finish:

Contact:Gold Over Nickel.
Shell:Nickel Over All Over.

Electrical:

Operating Voltage:30V
Current Rating:0.5 A.
Operating Temperature:-20°C TO +85°C.



C1-VCC
C2-RST
C3-CLK
C5-GND
C6-VPP
C7-I/O

REFERENCE SIM CARD PLUG