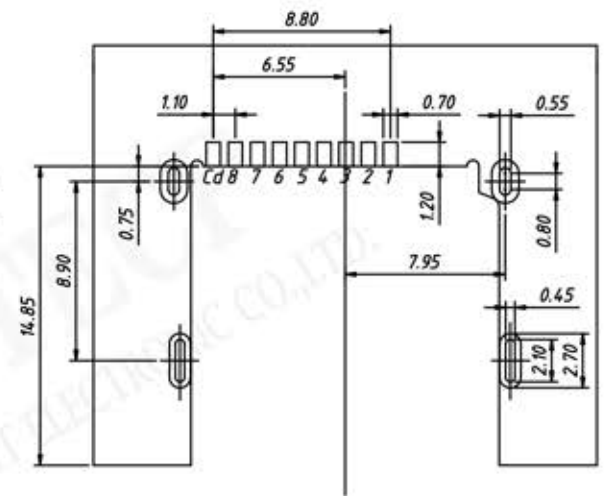
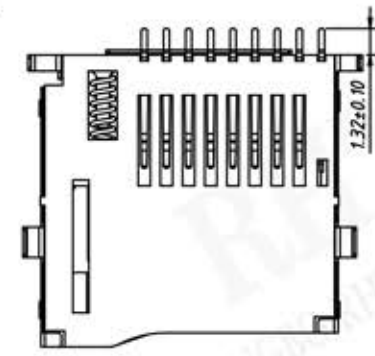
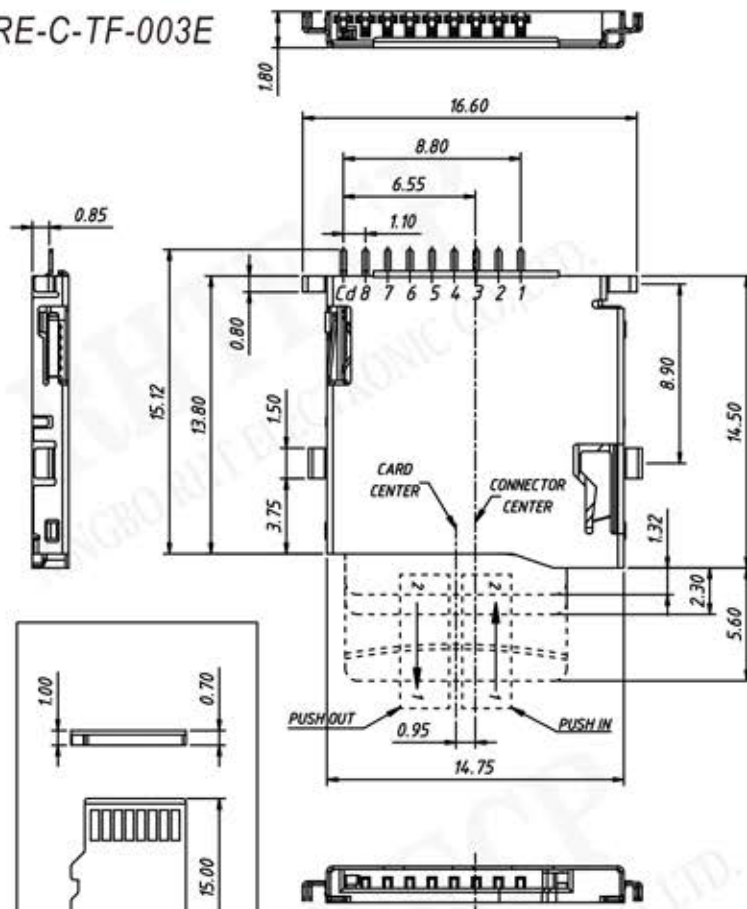
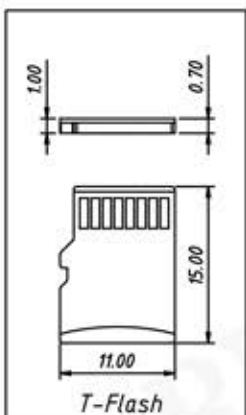


P/N: RE-C-TF-003E



RECOMMENDED PCB HOLE LAYOUT  
COMPONENT SIDE VIEW (TOLERANCE: ±0.05)



PIN NO	NAME	TYPE	DESCRIPTION
1	DAT2	I/O/PP	DATE LINE(BIT2)
2	CD/DAT3	I/O/PP	CARD EDTECT DATE LIN(BIT3)
3	CMD	PP	COMMAND RESPONSE
4	VDD	S	SUPPLY VOLTAGE
5	CLX	I	CLOCK
6	VSS	S	SUPPLY VOLTAGE GROUND
7	DAT0	I/O/PP	DATE LINE(BIT0)
8	DAT1	I/O/PP	DATE LINE(BIT1)

**Material:**  
 Housing: High Temperature Thermoplastic, UL94V-0, Black.  
 Terminal: Copper Alloy.  
 Shell: Stainless steel.  
 Contact: Contact Area: Au G/F, Solder area: Matte tin  
 80u" Min, Under plate Ni 30u" Min all over.  
 CD Pin: Contact Area: Au G/F, Under plate Ni 30u" Min all over.

**Electrical:**  
 Rated current: 1.0 A  
 Rated Voltage: 30V  
 Contact Resistance: 50mΩ Max.  
 Insulation Resistance: 1000MΩ Min./500VDC  
 Dielectric Withstanding Voltage: 500V AC  
 Solder ability: 255oC ±5oC, 5±0.5s  
 Durability: 10000 Cycles Min.  
 Operating condition: Temperature -40°C TO +85°C  
 Humidity 80% R.H. Max.