

**Material**

Screw: M2, Steel, Zn plated  
 Shrapnel: Phosphor bronze, Nickel plated  
 Pin header: Brass, Tin plated  
 Housing: PA66, UL94V-0

**Electrical**

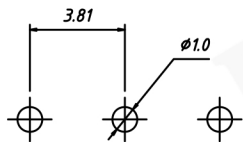
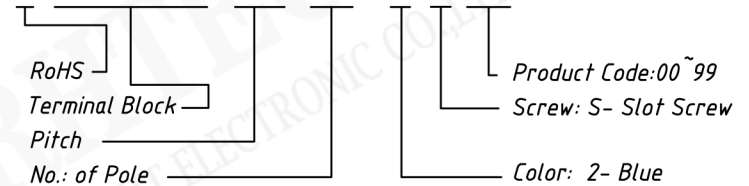
Rated voltage: 130V  
 Rated current: 10A  
 Wire range: 24 ~ 18AWG 1.0mm<sup>2</sup>  
 Contact Resistance: 20 mΩ  
 Insulation resistance: 5000MΩ/DC1000V  
 Withstand voltage: AC2000V / 1 min

**Mechanical**

Temp. Range: -40 °C ~ +105 °C  
 Soldering: 250 °C 5Sec. Max.  
 Torque: 0.2 N.m (1.7Lb. in)  
 Strip length: 5 ~ 6 mm

**Order Information**

RE - C-340 - 3.81-XXP-2 S XX

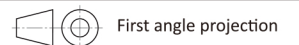


PCB LAYOUT



NINGBO RHT ELECTRONIC CO., LTD

UNITS:mm		SHEET SIZE:A4		SCALE: ---	
> 0 ~ 3	> 3 ~ 18	> 18 ~ 50	> 50 ~ 120		
± 0.12	± 0.15	± 0.3	± 0.5		



TERMINAL BLOCK